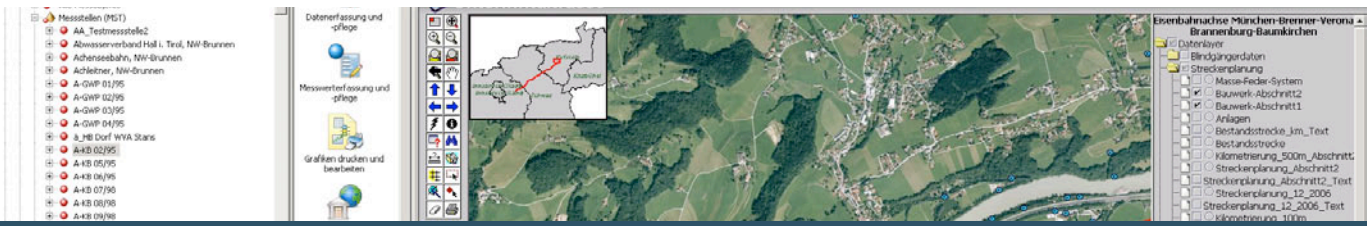




GeODin WebGIS



GeODin WebGIS enables an existing GIS system to interact dynamically with a GeODin database. Full WebGIS functionality is available via a browser window in the GeODin user interface.



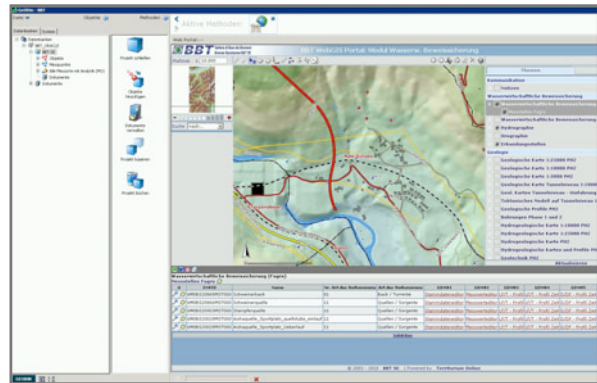
What is WebGIS?

With Web GIS, users do not need to purchase and install additional GIS software in order to access and work with maps and databases. Also, users do not need to become experts in sophisticated GIS applications, since the functionality is made available through an integrated viewer with a simple, user-friendly interface.

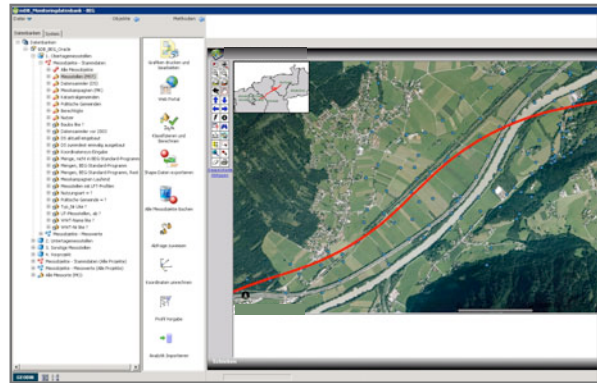
GeODin WebGIS Interaction

GeODin links to an existing WebGIS by using predefined system queries or the GeODin objects measurement points associated with such queries. To show a new object in the GIS window it must have known coordinates.

Upon selecting a query or measurement point and choosing the function "Show in web portal" from the GeODin Method Bar, the point(s) of interest are shown in the map browser window on the right hand side of the screen. From here users may choose between working entirely in a GIS context, or in combination with GeODin editors and layouts.



GeODin and WebGIS interaction



GeODin allows all the WebGIS tools to be accessed from one interface

Key features

- Compatible with most WebGIS systems
- Uses existing WebGIS functionality
- Dynamic GeODin/ WebGIS interaction
- Supports user authentication



The **GeODin WebGIS** requires a GeODin 7 license. For further information and a product demonstration please contact Fugro Consult.



A typical photo in WebGIS showing two linear features (tunnels)